



EQUALIZER[™]
INTERNATIONAL

SW15TE

HYDRAULIC FLANGE SPREADER

MAXI KIT WITH STEPPED BLOCKS

Product Code: SW15TEMAXSPB

SPREADING FORCE = 15.5 T (155 kN)

It is recommended that tools are used in pairs giving
 $2 \times 15.5 = 31 \text{ T (310 kN)}$

TOOL WEIGHT = 7 kg (15.4 lbs)

KIT COMPONENTS

- 2 x SW15TE Wedgeheads
- 2 x 10,000 psi (700 bar) Hydraulic Hoses, 2 m (78.75") each
- 2 x 10,000 psi (700 bar) Hydraulic Cylinders
- 1 x 10,000 psi (700 bar) HP350D Sealed Hand Pump with Gauges
- 2 x Safety Blocks
- 2 x Stepped blocks
- 1 x Instruction Manual
- 1 x Carry-Case



WEIGHTS AND DIMENSIONS

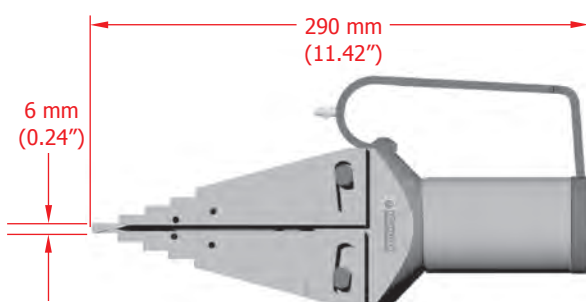
Tool with Hydraulic Cylinder = 7 kg (15.4 lb)

Carry-Case = 6 kg (13.2 lb)

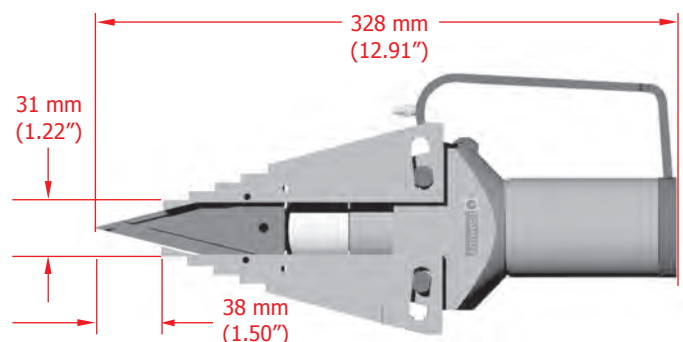
GROSS WEIGHT = 31 kg (68.3 lb)

Carry-Case Dimensions: 920 x 520 x 210 mm (36.22" x 20.47" x 8.26")

TOOL DIMENSIONS - CLOSED

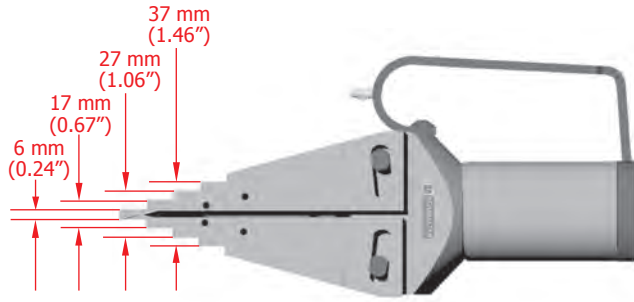


TOOL DIMENSIONS - OPEN

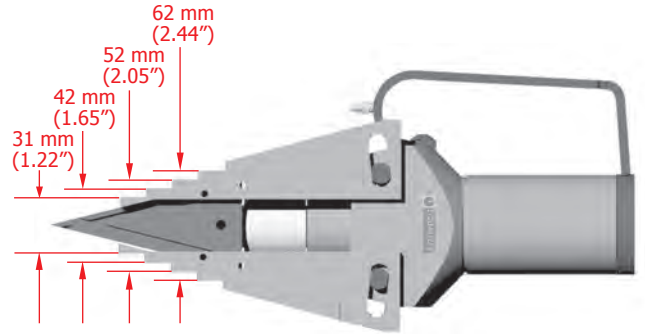




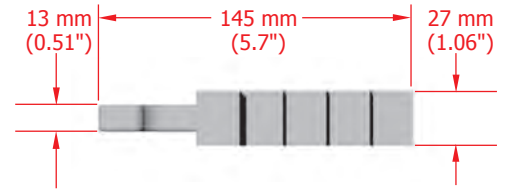
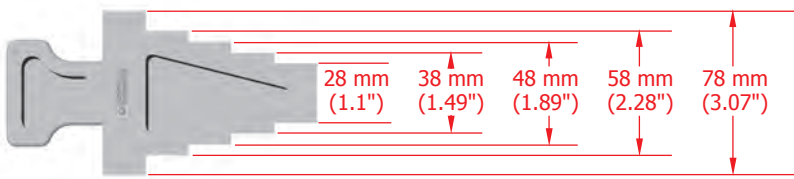
TOOL DIMENSIONS - CLOSED



TOOL DIMENSIONS - OPEN



SAFETY BLOCK DIMENSIONS

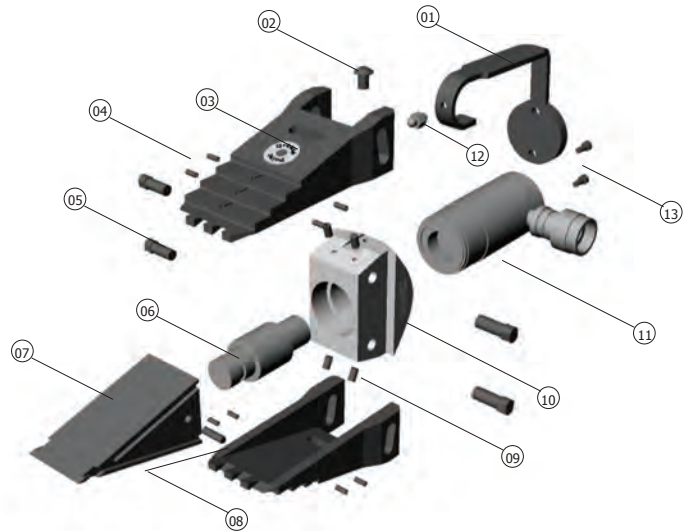


RANGE OF APPLICATION

All flanges with a minimum access gap of 6 mm (0.24")

PARTS LIST AND EXPLODED DRAWING

ITEM	PART No.	DESCRIPTION	QUANTITY
01	300701-01	HANDLE	01 each
02	401801-01	RETAINING SCREW FOR HANDLE	01 each
03	300203-02	JAWS	01 set of 2
04	301201-08	ROLL PINS	01 set of 8
05	300501-04	SLIDE PINS	01 set of 4
06	300301-01	CONNECTOR / PUSH ROD	01 each
07	300101-01	WEDGE	01 each
08	301301-01	GRUB SCREW	01 each
09	300401-04	GRUB SCREW	01 set of 4
10	301102-01	BODY	01 each
11	301002-01	HYDRAULIC CYLINDER	01 each
12	310601-01	GREASE NIPPLE	01 each
13	300801-02	BASE SCREWS FOR HANDLE	01 set of 2
14	301403-01	CYLINDER REPAIR KIT (Not Illustrated)	01 kit



STEPPED BLOCKS

stepped Blocks can be used singly or in pairs to increase the maximum spreading distance of the SW15TE to 81mm



WEIGHTS AND DIMENSIONS

Stepped Block = 0.52 kg (1.14 lb)
GROSS WEIGHT = 1.5 kg (3.5 lb)

